



FOR SALE - \$1,125,000.00

3,750 SF | OFFICE WAREHOUSE | SECURED YARD AREA AND STORAGE SHED
3285 Associate Drive, North Charleston, SC 29418



DRAYTON CALMES
PRINCIPAL

D: 843.579.0053

C: 843.991.0404

draytonc@norvellgroup.com

FOR SALE | 3,750 | OFFICE WAREHOUSE BUILDING | SECURED YARD AREA AND STORAGE SHED

3285 ASSOCIATE DRIVE | NORTH CHARLESTON, SC 29418

WAREHOUSE



This information has been secured from sources we believe to be reliable, but we make no representations or warranties, expressed or implied, as to the accuracy of the information. References to square footage or age are approximate. Lessee must verify the information and bears all risk for any inaccuracies.

DRAYTON CALMES

PRINCIPAL

D: 843.579.0053

C: 843.991.0404

draytonc@norvellgroup.com

FOR SALE | 3,750 | OFFICE WAREHOUSE BUILDING | SECURED YARD AREA AND STORAGE SHED

3285 ASSOCIATE DRIVE | NORTH CHARLESTON, SC 29418



STORAGE SHED

This information has been secured from sources we believe to be reliable, but we make no representations or warranties, expressed or implied, as to the accuracy of the information. References to square footage or age are approximate. Lessee must verify the information and bears all risk for any inaccuracies.

DRAYTON CALMES
PRINCIPAL

D: 843.579.0053

C: 843.991.0404

draytonc@norvellgroup.com

FOR SALE | 3,750 | OFFICE WAREHOUSE BUILDING | SECURED YARD AREA AND STORAGE SHED

3285 ASSOCIATE DRIVE | NORTH CHARLESTON, SC 29418



3285 Associate Drive

PRICING

\$1,125,000

This information has been secured from sources we believe to be reliable, but we make no representations or warranties, expressed or implied, as to the accuracy of the information. References to square footage or age are approximate. Lessee must verify the information and bears all risk for any inaccuracies.

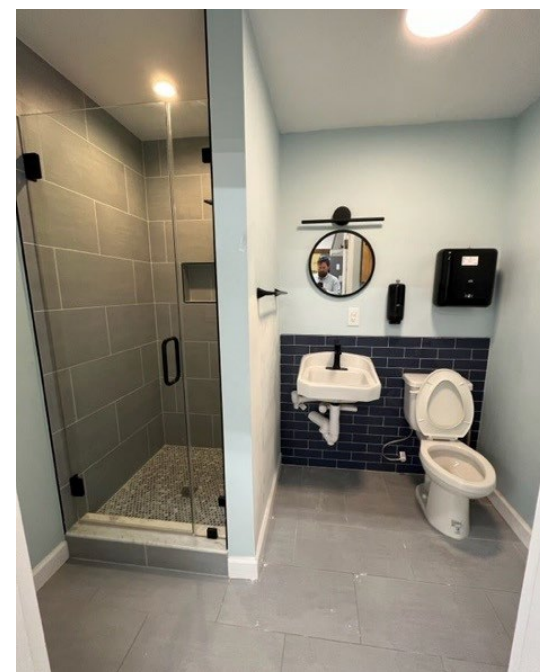
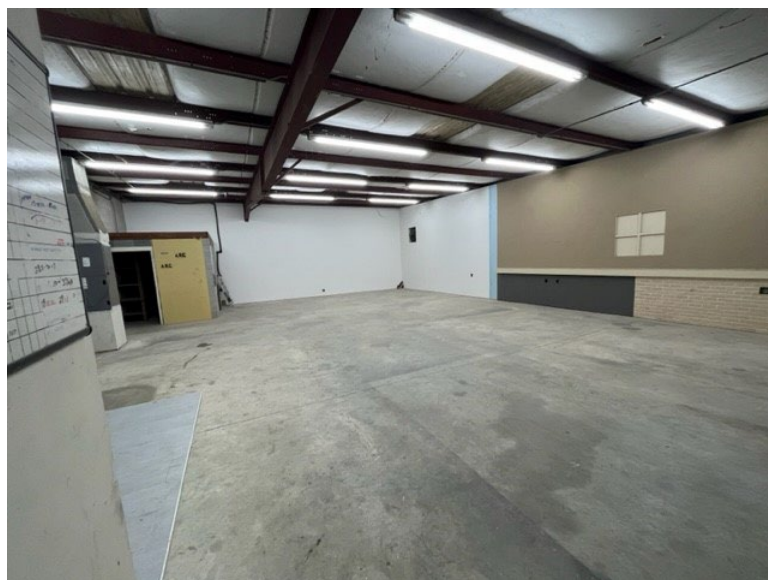
DRAYTON CALMES
PRINCIPAL
D: 843.579.0053
C: 843.991.0404
draytonc@norvellgroup.com

FOR SALE | 3,750 | OFFICE WAREHOUSE BUILDING | SECURED YARD AREA AND STORAGE SHED

3285 ASSOCIATE DRIVE | NORTH CHARLESTON, SC 29418

BUILDING SPECS	
Charleston County TMS:	397-00-00-19
Site Size:	.99 AC
2022 Property Tax:	\$7,259
2023 Property Insurance:	\$4,500
Total Building Area:	3,750 SF 1,750 SF - Office 2,000 SF - Warehouse
Office Space:	Six (6) hard wall offices, reception, conference rooms, three (3) restrooms and ample closet / storage spaces

Warehouse Ceiling:	12 ft
Yard Area and Storage Shed:	Fully fenced yard area with approx. 900 SF open storage space
Zoning:	M-1, Light Industrial (City of North Charleston)
Parking:	Ample parking
Property Condition:	Good
Year Built:	1984

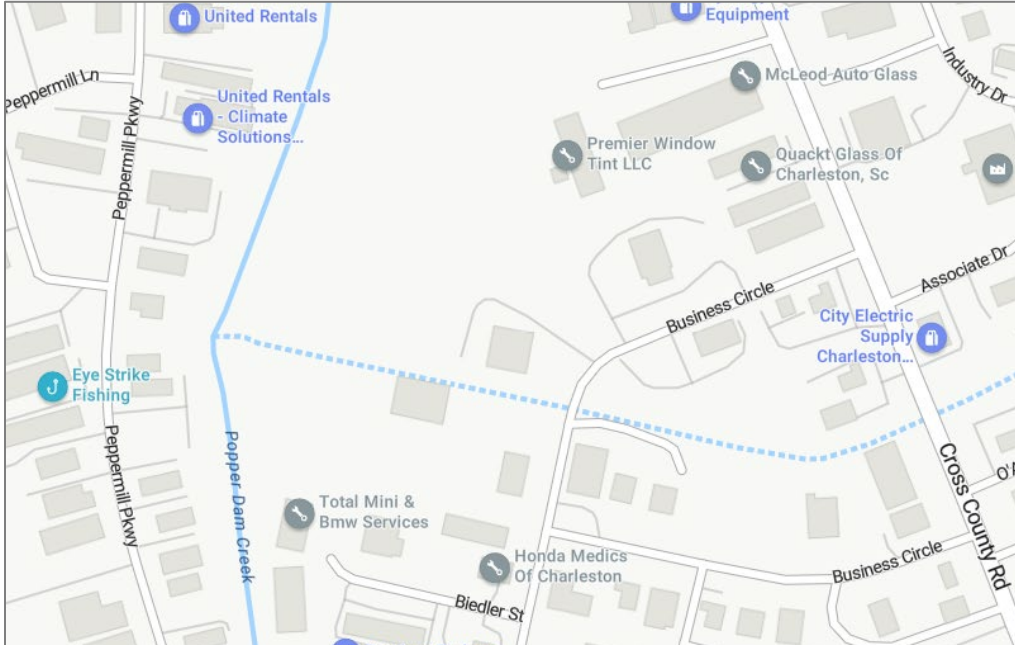


This information has been secured from sources we believe to be reliable, but we make no representations or warranties, expressed or implied, as to the accuracy of the information. References to square footage or age are approximate. Lessee must verify the information and bears all risk for any inaccuracies.

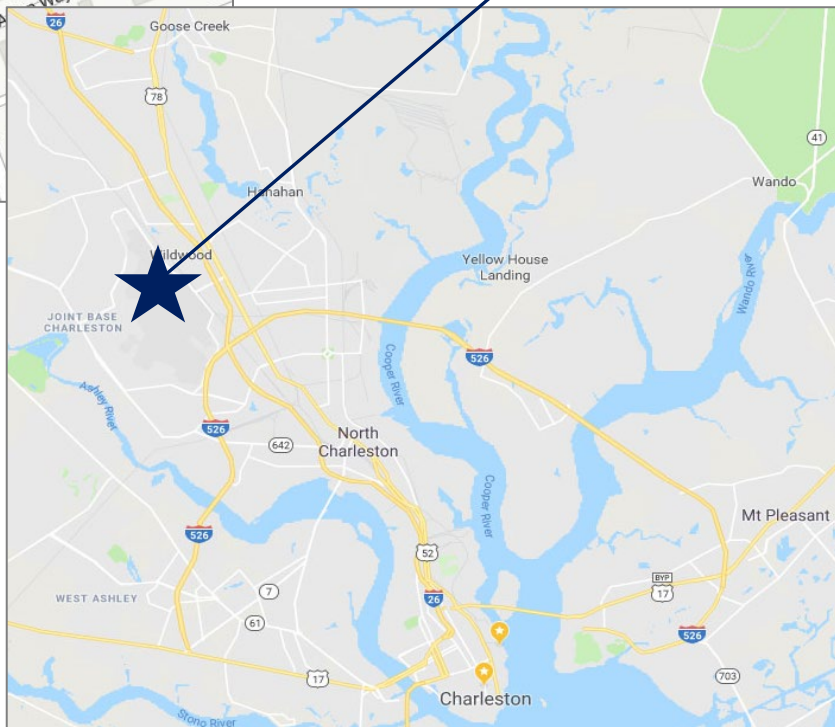
DRAYTON CALMES
PRINCIPAL
D: 843.579.0053
C: 843.991.0404
draytonc@norvellgroup.com

FOR SALE | 3,750 | OFFICE WAREHOUSE BUILDING | SECURED YARD AREA AND STORAGE SHED

3285 ASSOCIATE DRIVE | NORTH CHARLESTON, SC 29418



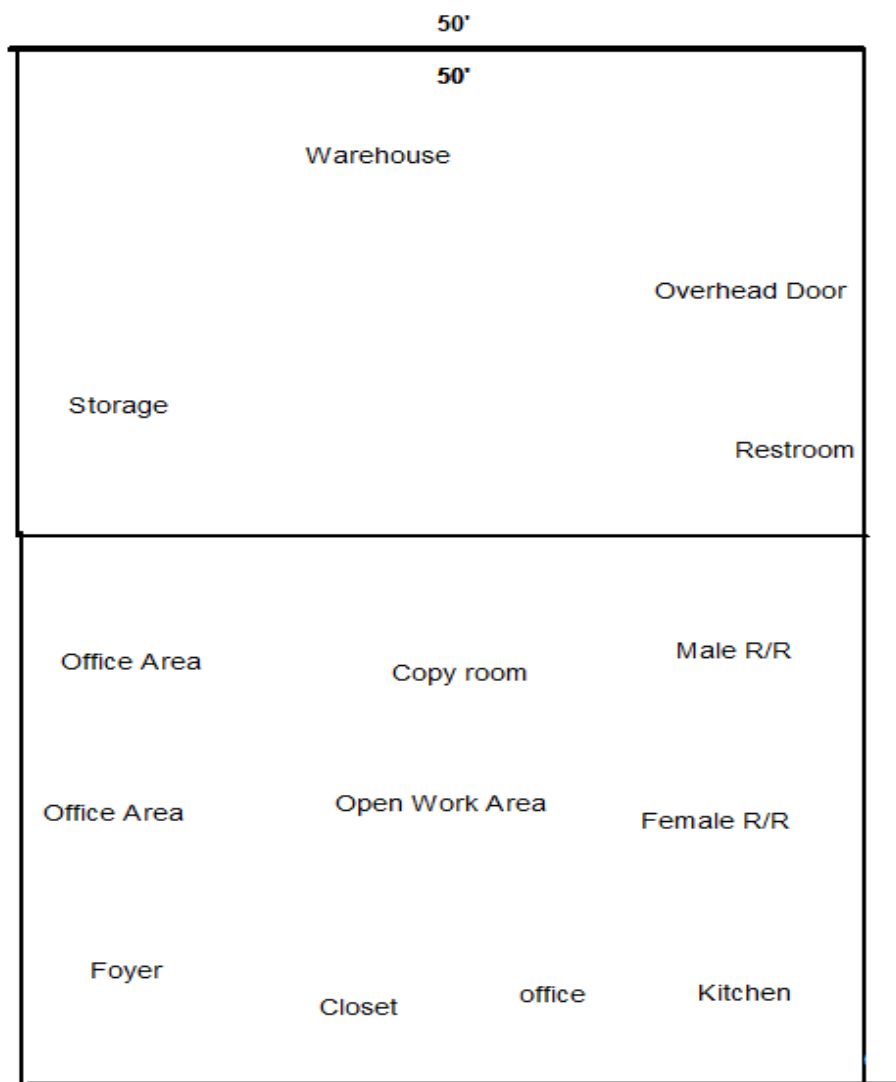
SITE



This information has been secured from sources we believe to be reliable, but we make no representations or warranties, expressed or implied, as to the accuracy of the information. References to square footage or age are approximate. Lessee must verify the information and bears all risk for any inaccuracies.

DRAYTON CALMES
PRINCIPAL
D: 843.579.0053
C: 843.991.0404
draytonc@norvellgroup.com

FLOOR PLAN



This information has been secured from sources we believe to be reliable, but we make no representations or warranties, expressed or implied, as to the accuracy of the information. References to square footage or age are approximate. Lessee must verify the information and bears all risk for any inaccuracies.

DRAYTON CALMES
PRINCIPAL
D: 843.579.0053
C: 843.991.0404
draytonc@norvellgroup.com

FOR SALE | 3,750 | OFFICE WAREHOUSE BUILDING | SECURED YARD AREA AND STORAGE SHED

3285 ASSOCIATE DRIVE | NORTH CHARLESTON, SC 29418



This information has been secured from sources we believe to be reliable, but we make no representations or warranties, expressed or implied, as to the accuracy of the information. References to square footage or age are approximate. Lessee must verify the information and bears all risk for any inaccuracies.

DRAYTON CALMES
PRINCIPAL
D: 843.579.0053
C: 843.991.0404
draytonc@norvellgroup.com