

# Promenade at Northwoods

7800 Rivers Avenue, North Charleston, SC 29406



## LOCATION

---

**Promenade at Northwoods** is 322,438 SF shopping center located across from Northwoods Mall, South Carolina's premiere shopping destination.

**Gander Outdoors, Boot Barn, Moe's Southwest Grill, Party City and Roper Hospital** out-patient clinic included in tenant mix.

## PREMISES

---

Suite 1080 – approx. **1,417 SF**  
Currently configured for home / lifestyle store. Conveniently located close to Rivers Avenue.

## RENT

---

**\$25.00 SF, NNN**

## CAM, TAXES & INSURANCE

---

\$4.53 SF (2019 estimated)

Contact

**DRAYTON CALMES**  
Norvell Real Estate Group, LLC  
Direct: 843.579.0053  
Main: 843.579.0055  
[draytonc@norvellgroup.com](mailto:draytonc@norvellgroup.com)  
[www.norvellgroup.com](http://www.norvellgroup.com)

**NORVELL**  
REAL ESTATE GROUP

# PROMENADE AT NORTHWOODS

7800 RIVERS AVENUE, NORTH CHARLESTON, SC



DEMOGRAPHICS	3 MILE	5 MILE	10 MILE
Population	60,508	141,236	362,711
Households	23,086	52,573	139,387
Average Household Income (\$)	58,574	61,729	66,520
<b>TRAFFIC COUNTS</b>	<b>+/- 40,000 VPD on Rivers Avenue</b>		

This information has been secured from sources we believe to be reliable, but we make no representations or warranties, expressed or implied, as to the accuracy of the information. References to square footage or age are approximate. Lessee must verify the information and bears all risk for any inaccuracies.

**DRAYTON CALMES**  
Leasing Agent

Direct: 843.579.0053  
Main: 843.579.0055  
Cell: 843.991.0404

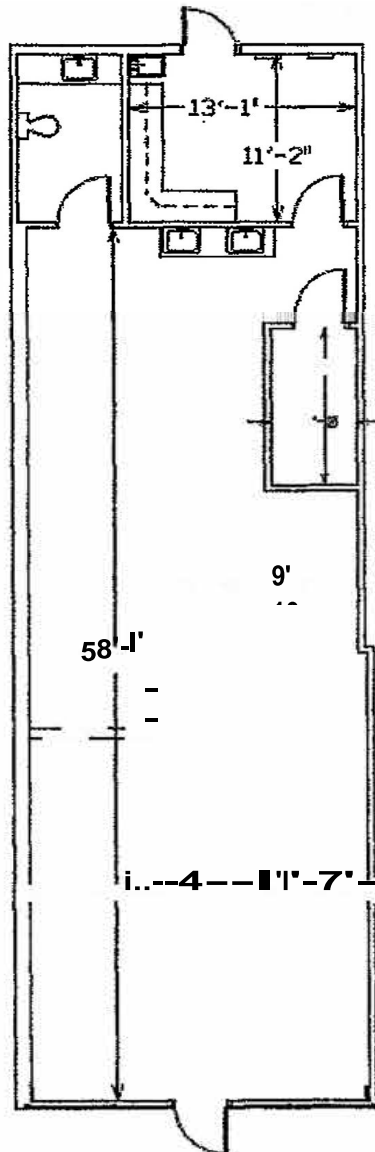
[draytonc@norvellgroup.com](mailto:draytonc@norvellgroup.com)

# PROMENADE AT NORTHWOODS

7800 RIVERS AVENUE, NORTH CHARLESTON, SC

## AS-BUILT PLAN

Suite 1080- 1,417 SF



Certain uses restricted. Please contact broker for more information.

This information has been secured from sources we believe to be reliable, but we make no representations or warranties, expressed or implied, as to the accuracy of the information. References to square footage or age are approximate. Lessee must verify the information and bears all risk for any inaccuracies.

**DRAYTON CALMES**  
Leasing Agent

Direct: 843.579.0053

Main: 843.579.0055

Cell: 843.991.0404

[draytonc@norvellgroup.com](mailto:draytonc@norvellgroup.com)